



GMT MONTHLY MEMBERSHIP PROGRESS REPORT

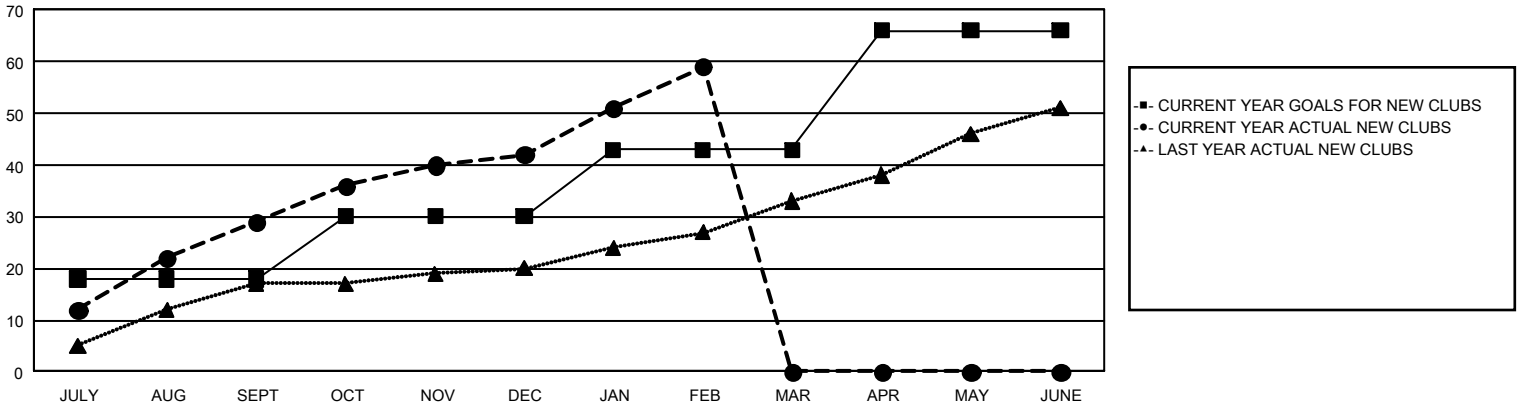
GAT Constitutional Area 7

Results as of: 2/29/2024

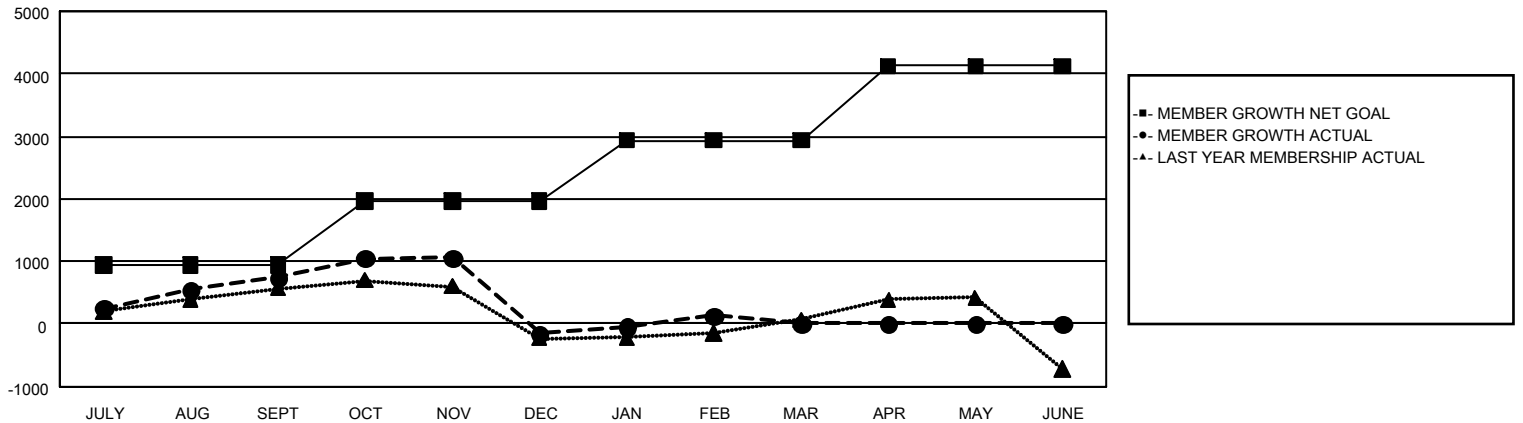
REPORT DOES NOT INCLUDE CLUBS IN UNDISTRICTED AREAS.

Clubs				Members			
RESULTS FOR 2023-2024				RESULTS FOR 2023-2024			
QUARTER	NEW CLUB GOAL	NEW CLUBS	DROPPED CLUBS	QUARTER	MEMBER GROWTH NET GOAL	MEMBER GROWTH ACTUAL	DROPPED MEMBERS ACTUAL (including transfers)
JULY/AUG/SEPT	18	29	21	JULY/AUG/SEPT	937	2,190	1,265
OCT/NOV/DEC	12	13	6	OCT/NOV/DEC	1,029	1,487	2,275
JAN/FEB/MAR	13	17	3	JAN/FEB/MAR	968	1,119	730
APR/MAY/JUNE	23	0	0	APR/MAY/JUNE	1,194	0	0

GOALS AND ACTUAL NEW CLUBS CUMULATIVE



GOALS AND ACTUAL MEMBERS CUMULATIVE



DROPPED CLUBS: 30	1,029 CLUBS OF 1,901 ADDED 1 OR MORE NEW MEMBERS	<u>GENDER DISTRIBUTION</u> MALE 24,105 (56.84%) FEMALE 18,278 (43.10%)
<u>DROPPED MEMBERS</u> DECEASED 320 CLUB CANCELLED 68 OTHER 3,881 <hr/> TOTAL 4,269	CLICK HERE FOR CUMULATIVE MEMBERSHIP DATA	TOTAL FAMILY UNIT MEMBERS 7,159 FAMILY MEMBERS PAYING HALF DUES 3,834